

# CASE STUDY

## BY MERSEN

2022

### HIGH FREQUENCY INFLUENCE ON THE DRIVE SYSTEM OF A DETACHABLE CHAIRLIFT AT OBERSTDORF OK MOUNTAIN RAILWAYS - GERMANY

#### THE ISSUE, IN SHORT

The See-Eck-Bahn is a detachable chairlift used at the Oberstdorf OK Mountain ski resort.

After installing new power modules in the frequency converter of the main drive, **errors occurred in the clamping force measurement.**

Furthermore, the **data connection to the snowmaker system broke down** when the lift drive was put into operation.

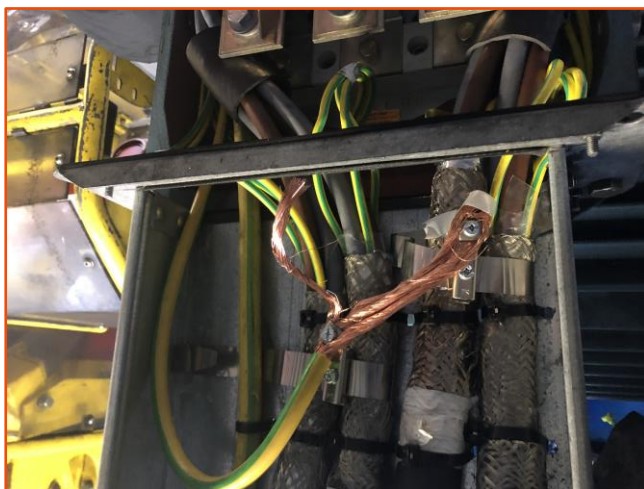


Leitner rope way overhead drive

#### SERVICE ASSIGNMENT OF MERSEN ÖSTERREICH HITTISAU

##### 1 - ANALYSIS: EVALUATION OF THE GROUNDING SYSTEM

After overall system inspection, analysis and high-frequency measurement, it appeared that the existing grounding system was not designed for HF-Influence.



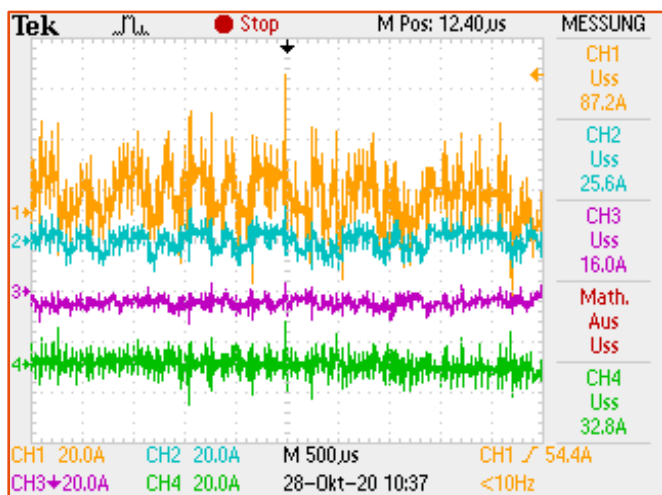
Existing grounding system



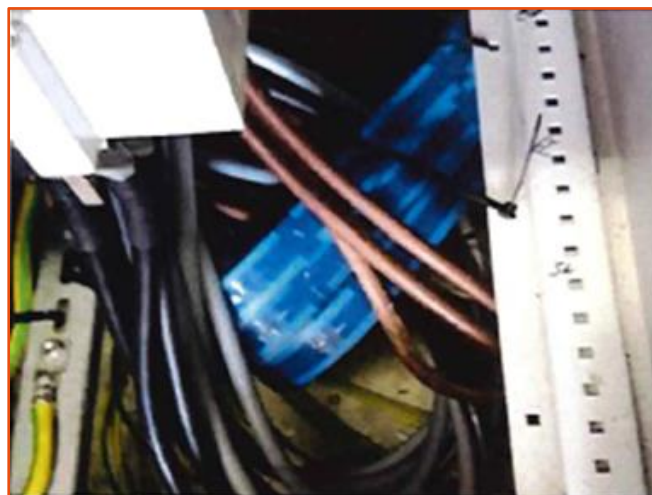
MERSEN PROPERTY

## 2 – ACTION

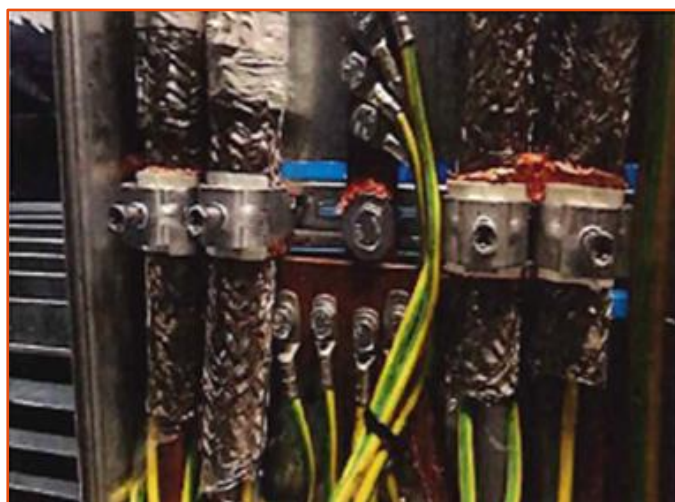
The Mersen’s team performed technical support for the improvement of the earthing system and the installation of damping cores.



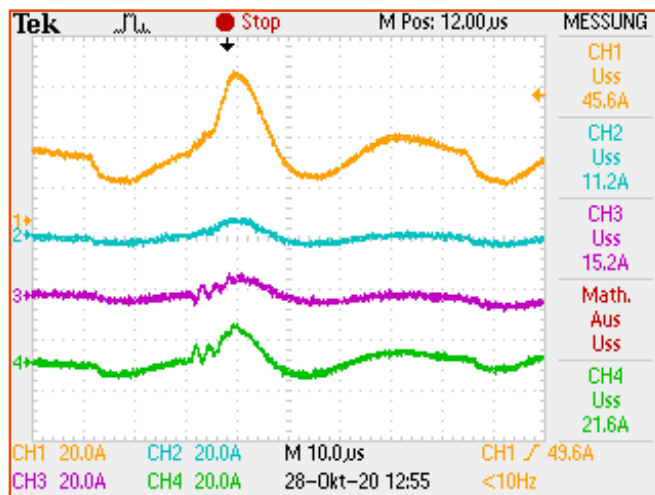
Result of the HF measurements without damping cores



Damping cores installed



Earthing system improved for HF-Influence



Result of the HF measurements with damping cores

### SUCCESSFUL ACTION

After the system check by Mersen, the installation of the damping cores and the improvement of the earthing system, the problems are solved.

#### Contact

Mersen Austria Hittisau Ges m b H  
 Brand 389 - A-6952 Hittisau  
 Phone: +43 0 5513 4113 179  
 Mail: service.htt@mersen.com

PTT-hf-case-study-EN-mersen-2203

MERSEN PROPERTY