

# ABAT15C 1500VDC max

## DC PROTECTION FUSES

### SQUARE BODY HIGH SPEED FUSE LINKS DC PROTECTION



Mersen DC offers provide a very high performant protection for DC applications in particular battery container or inverter protection.

ABAT15C fuses have been designed for applications from 1000VDC up to 1500VDC, with current ratings from 500A to 1250A.

This range is compliant with IEC 60269-7, a new standard dedicated for battery protection.

ABAT15C fuses allow them to clear high Max. Interrupting Rating and provide a limited power loss.

This range is CE (manufactured in France) and UL recognized.

For higher current ratings, Mersen proposes different solutions, please consult us.

## TECHNICAL DATA OVERVIEW

Rated DC Voltage UN	1000 up to 1500 VDC (L/R≤3ms)
Ampere Range (A)	500 ... 1250 A
Speed/Characteristic	aBat
I.R (DC) @ L/R≤4ms	250kA

## FEATURES & BENEFITS

- Designed for DC applications
- Dedicated to battery protection
- Fastest of their category
- Compactness
- High Max. Interrupting Rating
- Several terminals can be provided

## APPLICATIONS

- Protection of inverters
- Battery container protection
- Battery rack / string protection
- Power Conversion System (PCS) protection
- Protection of Battery Connection Panel (BCP)
- DC Systems protection

## STANDARDS

- UL Recognized - UL 248-13
- IEC 60 269-4 VSI
- IEC 60 269-7 (standard for battery protection)



# ABAT15C 1500VDC max

## PRODUCT RANGE

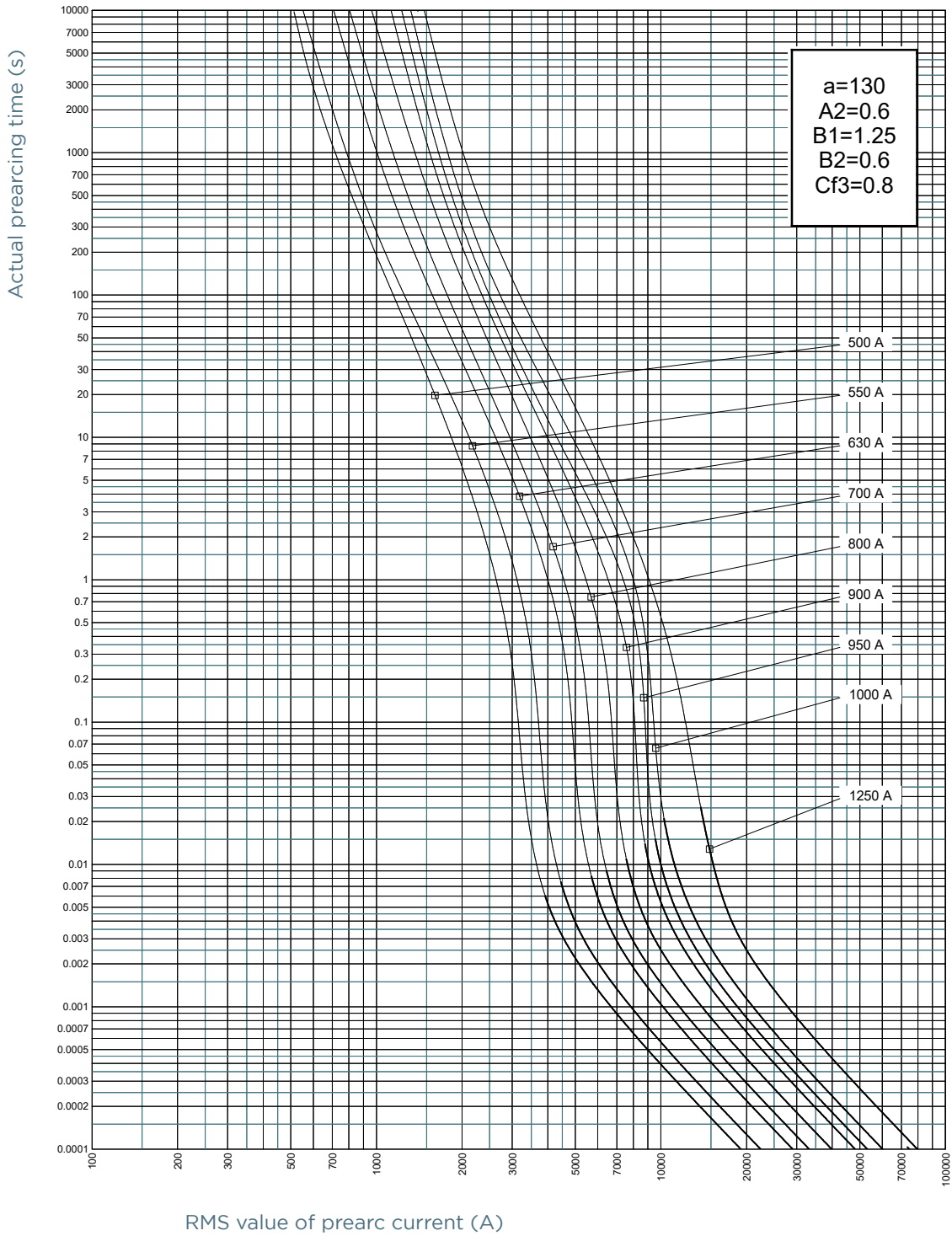


ABAT15C550-AIA

### ABAT15C with flush ends TTF

Catalog number	Item number	Rated voltage DC	Rated current I <sub>n</sub>	Pre-arcing I t	Clearing I t at Rated Voltage	Max. Interrupting Rating IR @1500VDC, L/R=4ms	Watt Loss @ 0,8 I <sub>n</sub>
ABAT15C500-AIA	B1200486	1500 V	500 A	36.5 kA <sup>2</sup> s	125 kA <sup>2</sup> s	250 kA	91 W
ABAT15C550-AIA	C1200487	1500 V	550 A	50 kA <sup>2</sup> s	165 kA <sup>2</sup> s	250 kA	94 W
ABAT15C630-AIA	D1200488	1500 V	630 A	84 kA <sup>2</sup> s	275 kA <sup>2</sup> s	250 kA	96 W
ABAT15C700-AIA	E1200489	1500 V	700 A	110 kA <sup>2</sup> s	370 kA <sup>2</sup> s	250 kA	102 W
ABAT15C800-AIA	F1200490	1500 V	800 A	159 kA <sup>2</sup> s	530 kA <sup>2</sup> s	250 kA	109 W
ABAT15C900-AIA	G1200491	1500 V	900 A	231 kA <sup>2</sup> s	765 kA <sup>2</sup> s	250 kA	110 W
ABAT15C1000-AIB	H1200492	1500 V	1000 A	440 kA <sup>2</sup> s	1515 kA <sup>2</sup> s	250 kA	91 W
ABAT15C1250-AIA	J1200493	1500 V	1250 A	678 kA <sup>2</sup> s	2620 kA <sup>2</sup> s	250 kA	125 W

## TIME CURRENT CHARACTERISTIC CURVES

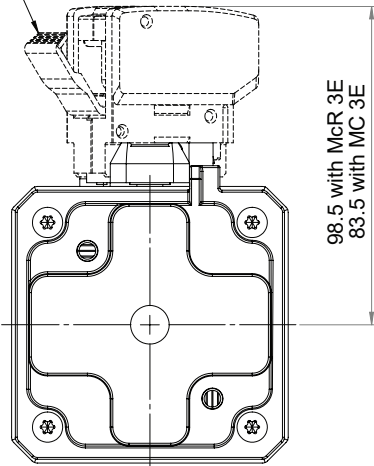


# ABAT15C 1500VDC max

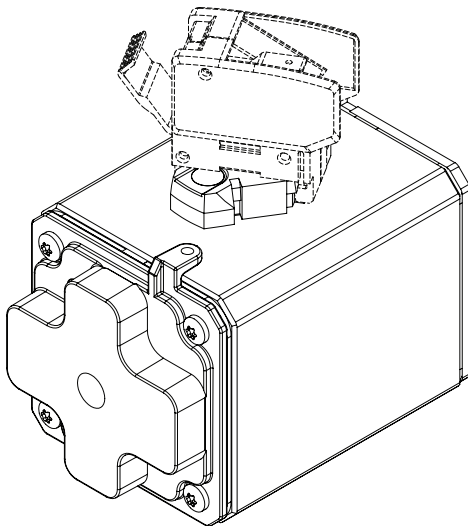
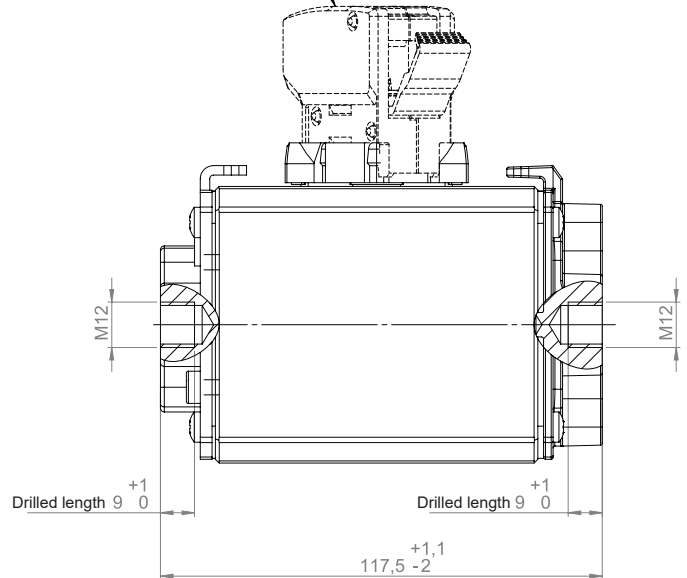
## DIMENSIONS

### ABAT15C - with flush ends TTF

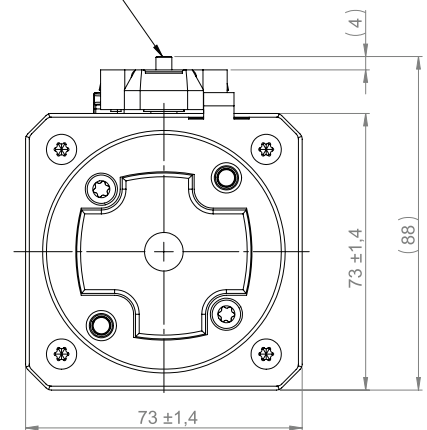
Indicator lever is visible after fuse has operated



Option microswitch



Striker is visible after fuse has operated



Dimensions in mm

# ABAT15C 1500VDC max

## ACCESSORIES

### Microswitches

Catalog number	Item number	Rated voltage AC (IEC)	Rated voltage DC (IEC)	Rated current $I_n$	AC voltage withstand test <sup>1</sup>	Impulse withstand voltage $U_{imp}$ 1.2/50Qs <sup>2</sup>	Rated im-pulse with-stand voltage $U_{imp}$	Indication System	Breaking capacity, Non inductive circuit, 30V / 110V / 250V	Breaking capacity, Inductive circuit: L/R=25ms, 30V / 110V / 250V	Package	Weight
<b>Insulation Voltage 2200VAC/VDC</b>												
MCR3E1-5N	G310023	2200 V	2200 V	3 A	20 kV	30 kV	30 kV	standard	5A / 0,5A / -	- / 1,6A / 0,3A	1	60 g
<sup>1</sup> Between power circuit and microswitch terminals as per IEC 60 and 694 and NFC 64010 (50/60 Hz 1 min duration in dry air) <sup>2</sup> Between power circuit and microswitch terminals $U_{imp}$ : impulse voltage as per IEC 60947-1												