

Central Bolted Tag fuse-links gG 690VAC

LOW VOLTAGE IEC FUSES

BS FUSE-LINKS



The fuse complies with standard EN 60269-2 and standard BS 88 part 2. These fuses are designed for : “General purpose use” protection (gG type). This fuse range insures an excellent current limitation for all overloads on a large range of applications. Their size cannot allow exchange by other fuses of higher rating in their range. They are screwed into fuseholders or bolted directly onto busbars, or in fuse interrupters disconnectors.

TECHNICAL DATA OVERVIEW

Current Range In	450 to 800 A
Rated voltage AC (IEC)	690 V
Breaking capacity AC	80 kA
Breaking capacity DC	40 kA
Speed/Characteristic	gG
Body Material	Ceramic
BS type	BTTM, BTLM

FEATURES & BENEFITS

- Excellent current limitation for all overloads

APPLICATIONS

- These fuses are designed for : “General purpose use” protection (gG type)

STANDARDS

- EN 60269-2
- BS88-2



Central Bolted Tag fuse-links gG 690VAC

PRODUCT RANGE



BTTM69V560

Type C2 690VAC gG BTTM

Catalog number	Item number	Rated voltage AC (IEC)	Rated current I _n	Pre-arcing I ² t	Clearing I ² t at Rated Voltage	Rated breaking capacity AC	Power dissipation at I _n	Weight
BTTM69V450	Y1006639	690 V	450 A	650000 A ² s	3300000 A ² s	80 kA	42 W	1.11 kg
BTTM69V500	Z1006640	690 V	500 A	850000 A ² s	4250000 A ² s	80 kA	48 W	1.11 kg
BTTM69V560	A1006641	690 V	560 A	1200000 A ² s	5800000 A ² s	80 kA	50 W	1.11 kg
BTTM69V630	B1006642	690 V	630 A	1546000 A ² s	9800000 A ² s	80 kA	54 W	1.11 kg



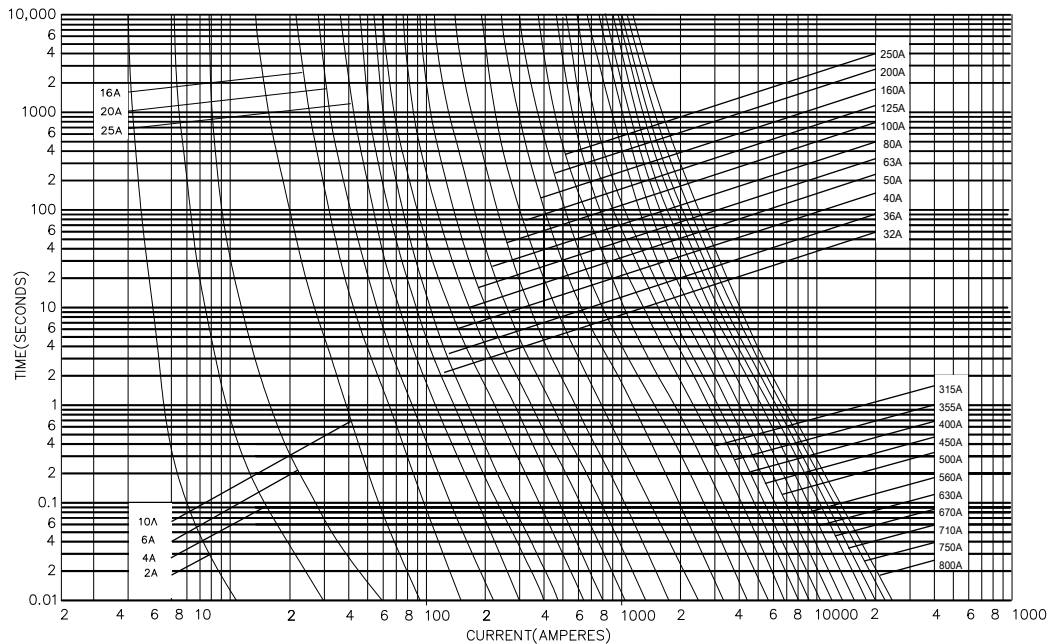
BTLM69V800

Type C3 690VAC gG BTLM 4 hole

Catalog number	Item number	Rated voltage AC (IEC)	Rated current I _n	Pre-arcing I ² t	Clearing I ² t at Rated Voltage	Rated breaking capacity AC	Power dissipation at I _n	Weight
BTLM69V670	D1019271	690 V	670 A	1950 kA ² s	10100 kA ² s	80 kA	60 W	1.4 kg
BTLM69V710	E1019272	690 V	710 A	2400 kA ² s	12000 kA ² s	80 kA	62 W	1.4 kg
BTLM69V750	F1019273	690 V	750 A	3000 kA ² s	14200 kA ² s	80 kA	65 W	1.4 kg
BTLM69V800	G1019274	690 V	800 A	3769 A ² s	15000 kA ² s	80 kA	68 W	1.4 kg

TIME CURRENT CHARACTERISTIC CURVES

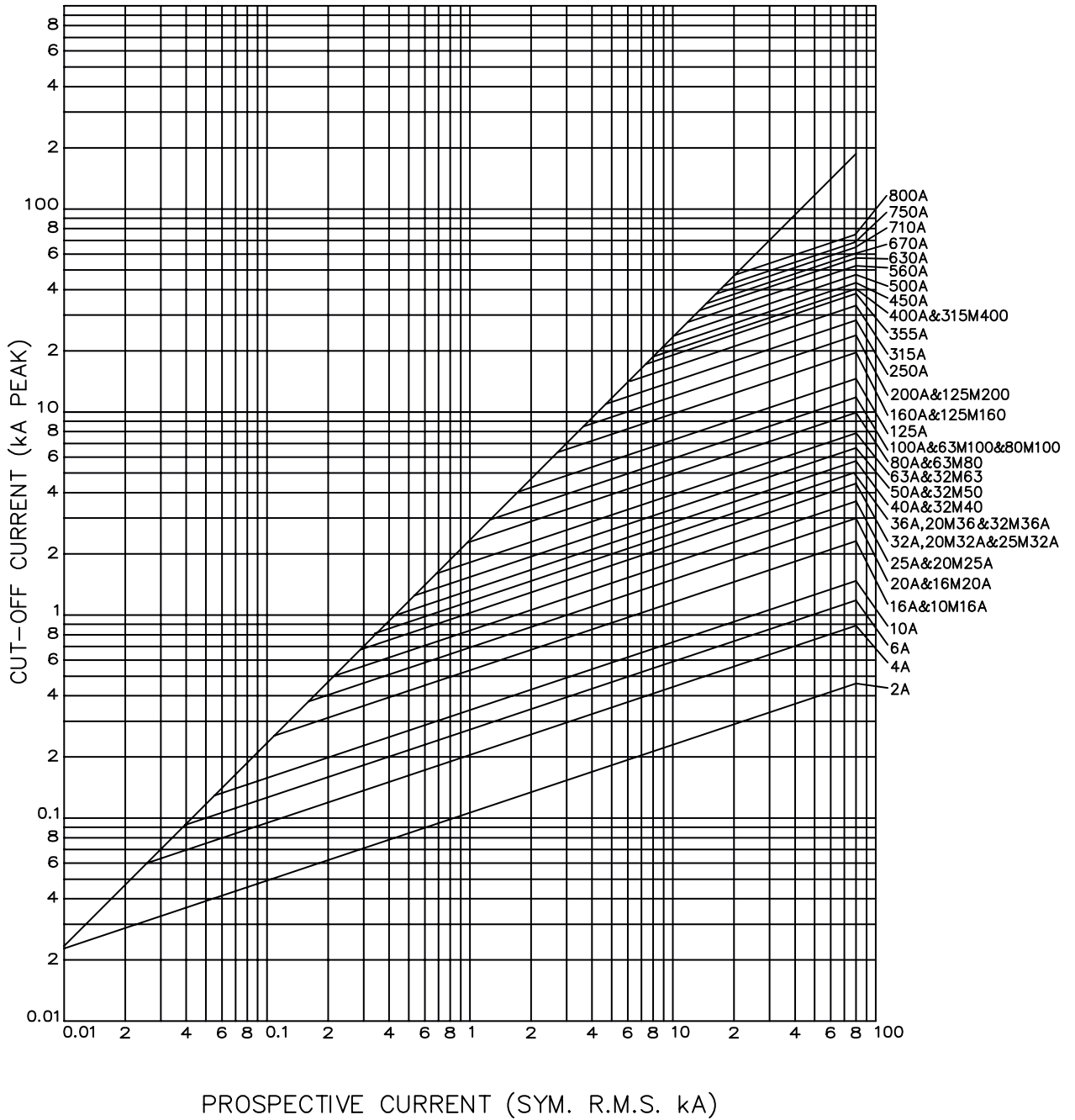
gM curves - 450 to 800 A - 690VAC



Central Bolted Tag fuse-links gG 690VAC

CUT-OFF CURRENT CHARACTERISTIC

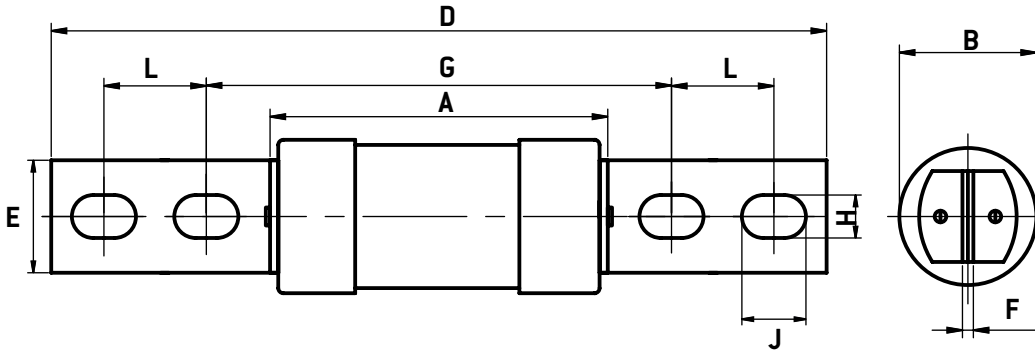
C Type - 690VAC



Central Bolted Tag fuse-links gG 690VAC

DIMENSIONS

C2 BTTM / C3 BTLM



BS REF	Fuse Type	Current rating (A)	A MAX	B MAX	D MAX	E MAX	F NOM	G NOM	H NOM	J NOM	L NOM
C2	BTTM	450, 500, 560, 630	83	74.4	212	26	6.3	133	10.3	16	25.4
C3	BTLM	670, 710, 750, 800	86	82.4	212	26	9.5	133	10.3	16	25.4