

# NZ D0 fuse-links gG 400/440VAC

## LOW VOLTAGE IEC FUSES

### DIN LV FUSE-LINKS D0



The D0 fuse-system is installed in low voltage distribution units, where fuse-links are accessible to non trained persons and can also be replaced by them.

The system is the most modern of the screw systems and designed for 400VAC/250VDC networks.

The D0 fuse range comprises the standardized fuse sizes D01, D02 and D03.

The range of applications for D0 fuse-links for general application is the protection of cables and power lines. They limit and cut off unacceptable overcurrents and short circuit currents up to their nominal breaking capacity. D0 fuse-links “gG” also protect equipments and installations against dynamic effects of high short circuit currents.

## TECHNICAL DATA OVERVIEW

Voltage Range AC	400 ... 440 VAC
Voltage DC	250 VDC
Ampere Range (A)	2 ... 100 A
Speed/Characteristic	gG
I.R. AC (IEC)	50 kA
Product Size	D01 to D03

## FEATURES & BENEFITS

- Insulated body suitable for high mechanical and thermal impacts
- Top and bottom contacts made of nickel plated or silver plated copper alloy
- Safe cut-off short circuits and over currents due to special design of fuse element
- Clear indication of operation condition due to coloured indicator un top contact
- Low power dissipation
- Optimized size
- Resistant to aging

## APPLICATIONS

- House incoming units
- Meter distribution units
- Distribution cabinets
- Installation cabinets
- Fuse boxes

## STANDARDS

- DIN VDE 0636-3



# NZ D0 fuse-links gG 400/440VAC

## PRODUCT RANGE



D01GG40V2

### Size D01 (E14) gG

Catalog number	Item number	Rated voltage AC (IEC)	Rated voltage DC (IEC)	Rated current I <sub>n</sub>	Colour	Power dissipation at I <sub>n</sub>	Utilisation category	Package	Weight
D01GG40V2	T214676	400 V	250 V	2 A	pink	1.5 W	gG	50	6.6 g
D01GG40V4	W200809	400 V	250 V	4 A	brown	1.6 W	gG	50	6.6 g
D01GG40V6	B215695	400 V	250 V	6 A	green	1.7 W	gG	50	6.6 g
D01GG40V10	W211090	400 V	250 V	10 A	red	1.8 W	gG	50	6.6 g
D01GG40V13	C201206	400 V	250 V	13 A	black	2.1 W	gG	50	6.6 g
D01GG40V16	R223023	400 V	250 V	16 A	grey	2.2 W	gG	50	6.6 g



D02GG40V20

### Size D02 (E18) gG

Catalog number	Item number	Rated voltage AC (IEC)	Rated voltage DC (IEC)	Rated current I <sub>n</sub>	Colour	Power dissipation at I <sub>n</sub>	Utilisation category	Package	Weight
D02GG40V20	B217742	400 V	250 V	20 A	blue	2 W	gG	50	12 g
D02GG40V25	W213160	400 V	250 V	25 A	yellow	3 W	gG	50	12 g
D02GG40V32	S227647	400 V	250 V	32 A	black	3.5 W	gG	50	12 g
D02GG40V35	R219826	400 V	250 V	35 A	black	3.9 W	gG	50	12 g
D02GG40V40	Q1028666	400 V	250 V	40 A	black	3.9 W	gG	50	12 g
D02GG40V50	D215191	400 V	250 V	50 A	white	4.7 W	gG	50	12 g
D02GG40V63	C201873	400 V	250 V	63 A	copper	5.4 W	gG	50	12 g



D03GG40V80

### Size D03 (M30x2) gG

Catalog number	Item number	Rated voltage AC (IEC)	Rated voltage DC (IEC)	Rated current I <sub>n</sub>	Colour	Power dissipation at I <sub>n</sub>	Utilisation category	Package	Weight
D03GG40V80	L216716	400 V	250 V	80 A	silver	5.6 W	gG	10	41 g
D03GG40V100	N212647	400 V	250 V	100 A	red	6.7 W	gG	10	41 g



D01GG44V10

### Size D01 (E14) gG Marine

Catalog number	Item number	Rated voltage AC (IEC)	Rated voltage DC (IEC)	Rated current I <sub>n</sub>	Colour	Power dissipation at I <sub>n</sub>	Utilisation category	Package	Weight
D01GG44V2	E218780	440 V	250 V	2 A	pink	1.5 W	gG	50	6.6 g
D01GG44V4	V219829	440 V	250 V	4 A	brown	1.6 W	gG	50	6.6 g
D01GG44V6	X223028	440 V	250 V	6 A	green	1.7 W	gG	50	6.6 g
D01GG44V10	S201358	440 V	250 V	10 A	red	1.8 W	gG	50	6.6 g
D01GG44V16	C211096	440 V	250 V	16 A	grey	2.2 W	gG	50	6.6 g

# NZ D0 fuse-links gG 400/440VAC

## PRODUCT RANGE

### Size D02 (E18) gG Marine

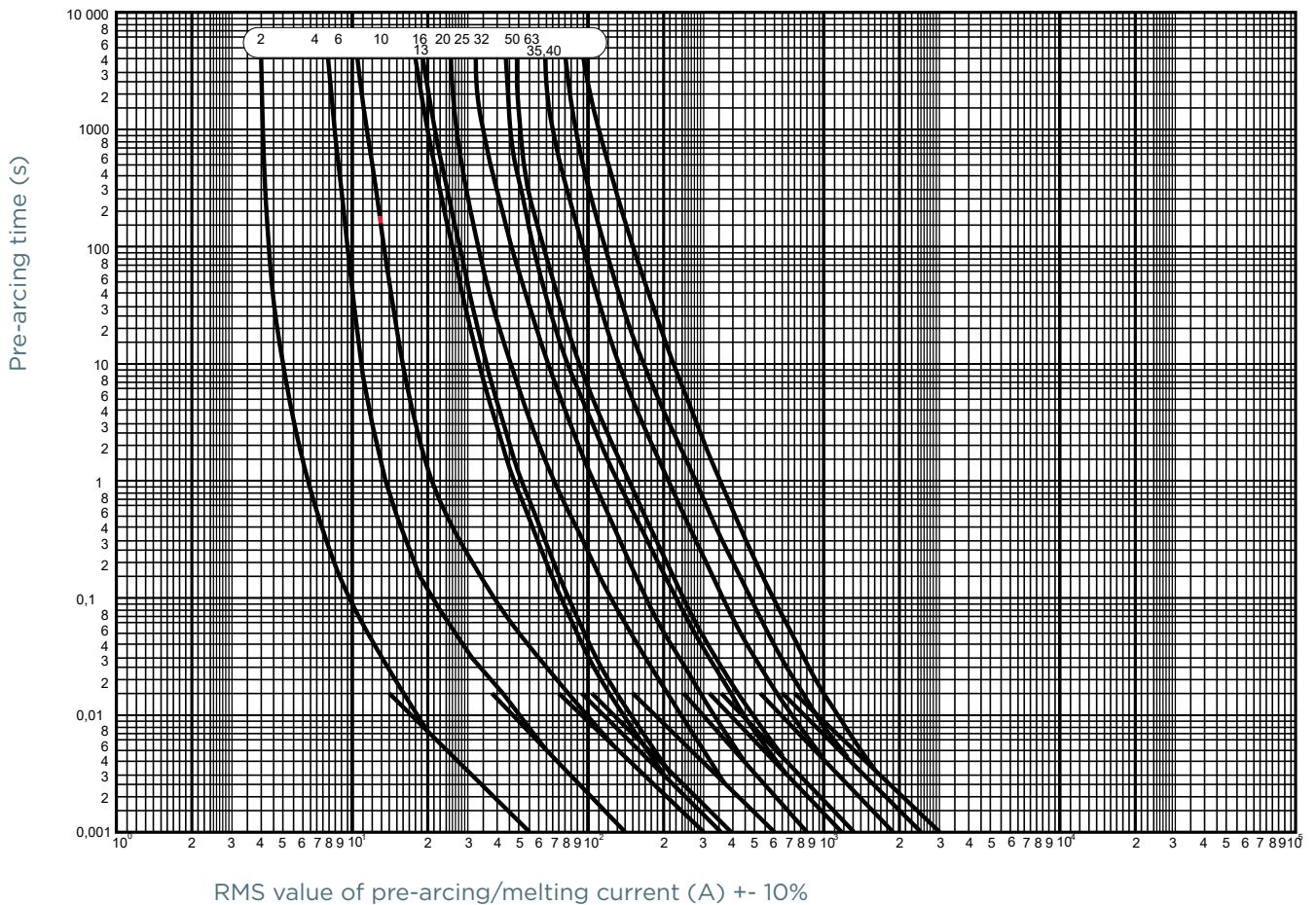


D02GG44V25

Catalog number	Item number	Rated voltage AC (IEC)	Rated voltage DC (IEC)	Rated current I <sub>n</sub>	Colour	Power dissipation at I <sub>n</sub>	Utilisation category	Package	Weight
D02GG44V20	X212126	440 V	250 V	20 A	blue	2 W	gG	50	12.6 g
D02GG44V25	S213663	440 V	250 V	25 A	yellow	3 W	gG	50	12.6 g
D02GG44V35	C214684	440 V	250 V	35 A	black	3.9 W	gG	50	12.6 g
D02GG44V50	J215702	440 V	250 V	50 A	white	4.7 W	gG	50	12.6 g
D02GG44V63	N216718	440 V	250 V	63 A	copper	5.4 W	gG	50	12.6 g

## TIME CURRENT CHARACTERISTIC CURVES

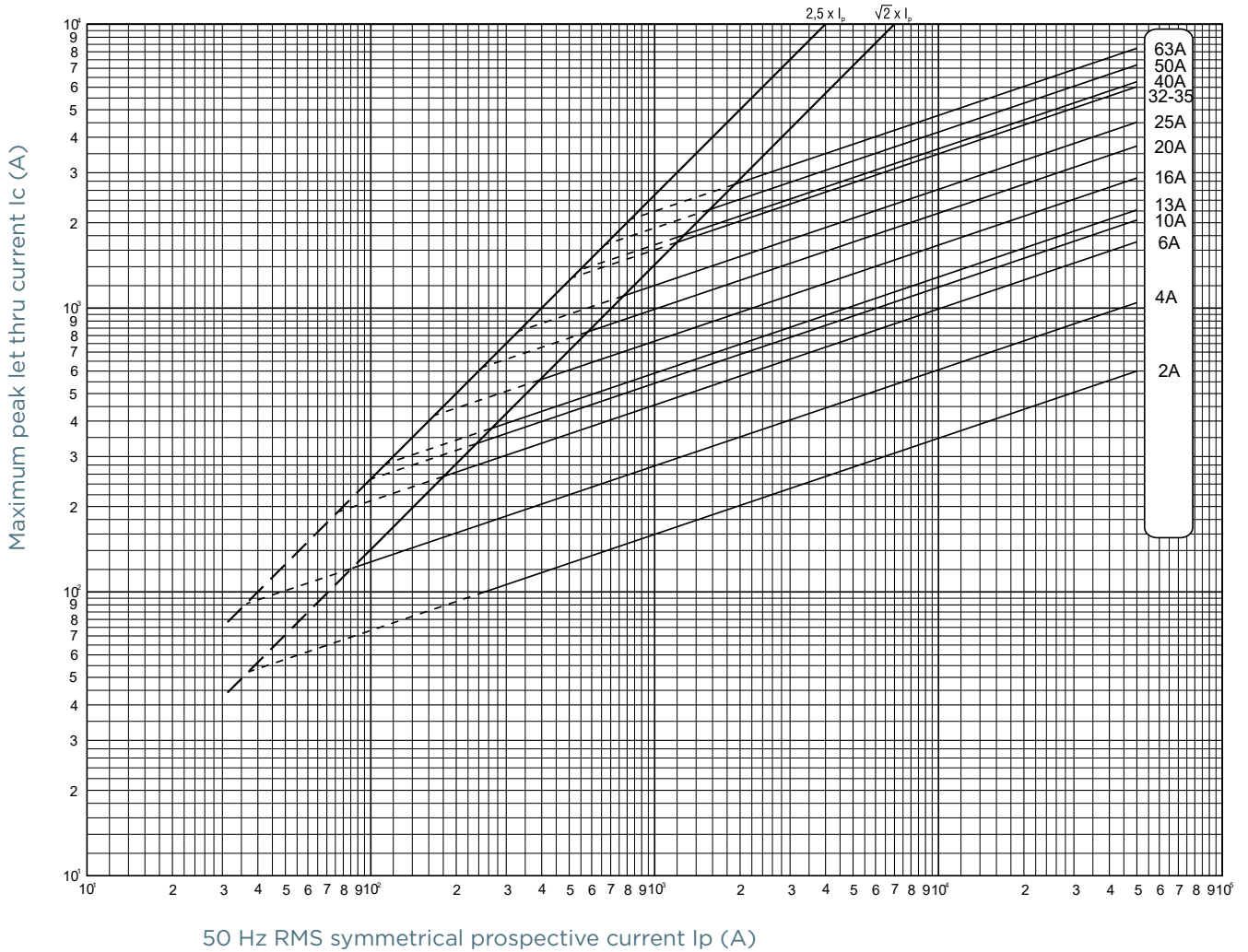
### NZ D0 fuse-links gG 400/440VAC



# NZ D0 fuse-links gG 400/440VAC

## CUT-OFF CURRENT CHARACTERISTIC

### NZ D0 fuse-links gG 400/440VAC



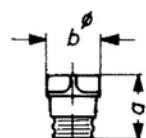
## DIMENSIONS

### NZ Fuse-Links

Size	a	b
D01	36 mm	11 mm
D02	36 mm	15 mm
D03	43 mm	22 mm

Dimensions in mm

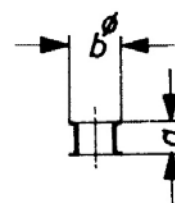
### NZ Screw Caps



Article Number	a	b
01714.000000	29,5	23
01715.000000	29,5	23
01710.000000	31	25
01711.000000	31	25
01712.000000	37	40

Dimensions in mm

### NZ Adapter Inserts



Article Number	a	b
01705.000000	10	12
01706.000000	10	16
01707.000000	10	27

Dimensions in mm

# NZ D0 fuse-links gG 400/440VAC

## ACCESSORIES



01711.000200



01770.000200



01714.000201



01715.000201

### Screw caps

Catalog number	Item number	Features	Package	Weight
<b>D0 screw caps 400/440 VAC, 250 V DC porcelain, with removal grips</b>				
01711.000200	T215044	D02, E18, 63A, with testing hole	20	18.5 g
01712.000200	V215045	D03, M30x2, 100A, with testing hole	10	84 g
01770.000200	F1033740	D01, E14, 16A, with testing hole	20	16.4 g
<b>D0 Screw caps, plastic-design, with testing hole</b>				
01714.000201	C1204926	D01, E14, 16A, with testing hole	20	11 g
01715.000201	D1204927	D02, E18, 63A, with testing hole	20	11 g



01716.000000

### D0 Screw cap wrench

Catalog number	Item number	Features	Package	Weight
01716.000000	X222936	Screw cap wrench	1	30 g



01705.006000



01705.010000

### D0 cartridge ring adapter inserts D01 E14

Catalog number	Item number	Features	Package	Weight
<b>D0 cartridge ring adapter inserts D01 (E14)</b>				
01705.002000	J216576	2A, pink	50	0.4 g
01705.004000	J219681	4A, brown	50	0.4 g
01705.006000	P206438	6A, green	50	0.4 g
01705.010000	M213014	10A, red	50	0.4 g



01706.002000



01706.020000

### D0 cartridge ring adapter inserts D02 E18

Catalog number	Item number	Application	Features	Package	Weight
<b>D0 cartridge ring adapter inserts D02 (E18)</b>					
01706.002000	K216577	For D01 fuse links in D02 fuse bases	2A, pink	50	0.6 g
01706.004000	S222127	For D01 fuse links in D02 fuse bases	4A, brown	50	0.6 g
01706.006000	R211983	For D01 fuse links in D02 fuse bases	6A, green	50	0.6 g
01706.010000	H216069	For D01 fuse links in D02 fuse bases	10A, red	50	0.6 g
01706.016000	Q218629	For D01 fuse links in D02 fuse bases	16A, grey	50	0.5 g
01706.020000	S200668	For D02 fuse links	20A, blue	50	0.5 g
01706.025000	R213524	For D02 fuse links	25A, yellow	50	0.6 g
01706.035000	J216070	For D02 fuse links	35A, black	50	0.5 g
01706.050000	R218630	For D02 fuse links	50A, white	50	0.6 g

# NZ D0 fuse-links gG 400/440VAC

## ACCESSORIES



01707.080000

### D0 cartridge ring adapter inserts D03 M30x2

Catalog number	Item number	Features	Package	Weight
<b>D0 cartridge ring adapter inserts D03 (M30x2)</b>				
01707.080000	T200669	80A, silver	20	1.6 g



01714.800000



01715.810000



01714.820000

### Locking devices

Catalog number	Item number	Features	Design	Package	Weight
01714.800000	D212546	Locking cap for D01 E14 fuse-bases for authorized personal only (EVU)	-	5	12.2 g
01714.810000	P213062	Locking cap for D01 E14 fuse-bases	-	5	12.4 g
01714.820000	K213564A	Special key for locking caps for authorized personal only (EVU)	-	1	32.5 g
01714.830000	J214069A	Special key for locking caps	-	1	43 g
01715.800000	R214582	Locking cap for D02 E18 fuse-bases for authorized personal only (EVU)	-	5	14 g
01715.810000	Y215094	Locking cap for D02 E18 fuse-bases	-	5	13.7 g



01713.000000

### Adapter inserts

Catalog number	Item number	Features	Package	Weight
01709.000000	P214028	Adapter for Size D02 fuse-links in Size D03 bases	25	1.3 g
01713.000000	Z215049	Adapter for Size D01 fuse-links in Size D02 bases	50	0.9 g
01733.000000	J218117	Adapter for Size D01 fuse-links in DL-bases	100	0.2 g