

Offset Tag fuse-links gG 415VAC/250VDC

LOW VOLTAGE IEC FUSES

BS FUSE-LINKS



The fuse complies with standard EN 60269-2 and standard BS 88 part 2. These fuses are designed for : “General purpose use” protection (gG type). This fuse range insures an excellent current limitation for all overloads on a large range of applications. Their size cannot allow exchange by other fuses of higher rating in their range. They are screwed into fuseholders or bolted directly onto busbars, or in fuse interrupters disconnectors.

TECHNICAL DATA OVERVIEW

Current Range In	36 to 63 A
Rated voltage AC (IEC)	415 V
Rated voltage DC (IEC)	250 V
Breaking capacity AC	80 kA
Breaking capacity DC	40 kA
Speed/Characteristic	gG
BS type	BEIT

FEATURES & BENEFITS

- Excellent current limitation for all overloads

APPLICATIONS

- These fuses are designed for : “General purpose use” protection (gG type)

STANDARDS

- EN 60269-2
- BS88-2



Offset Tag fuse-links gG 415VAC/250VDC

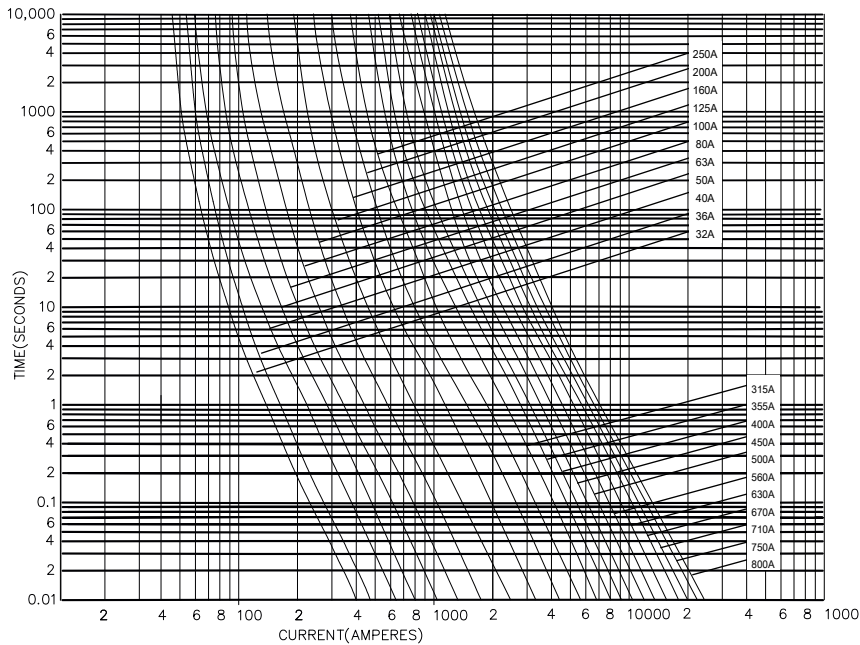
PRODUCT RANGE

Type A1 415VAC/250VDC gG BEIT

Catalog number	Item number	Rated voltage AC (IEC)	Rated voltage DC (IEC)	Rated current I _n	Pre-arcing I ² t	Clearing I ² t at Rated Voltage	Rated breaking capacity AC	Rated breaking capacity DC	Power dissipation at I _n	Weight
BEIT42V36	A1019176	415 V	250 V	36 A	1000 A ² s	4000 A ² s	80 kA	40 kA	2.8 W	31.5 g
BEIT42V40	B1019177	415 V	250 V	40 A	1300 A ² s	4200 A ² s	80 kA	40 kA	3 W	31.5 g
BEIT42V50	C1019178	415 V	250 V	50 A	2600 A ² s	8750 A ² s	80 kA	40 kA	3.6 W	31.5 g
BEIT42V63	D1019179	415 V	250 V	63 A	4000 A ² s	13900 A ² s	80 kA	40 kA	4.7 W	31.5 g

TIME CURRENT CHARACTERISTIC CURVES

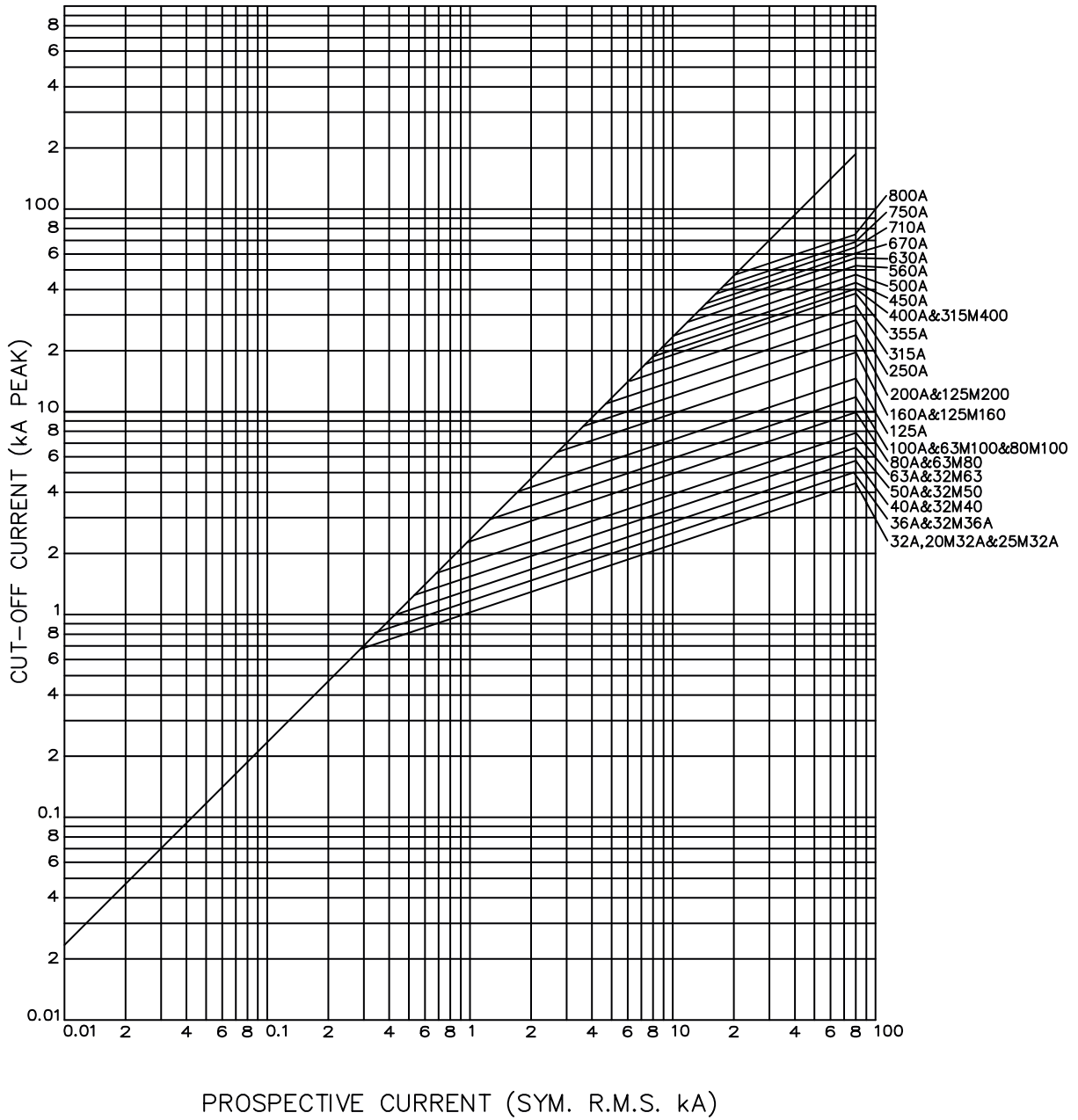
gG curves - 36 to 63 A - 415VAC / 250VDC



Offset Tag fuse-links gG 415VAC/250VDC

CUT-OFF CURRENT CHARACTERISTIC

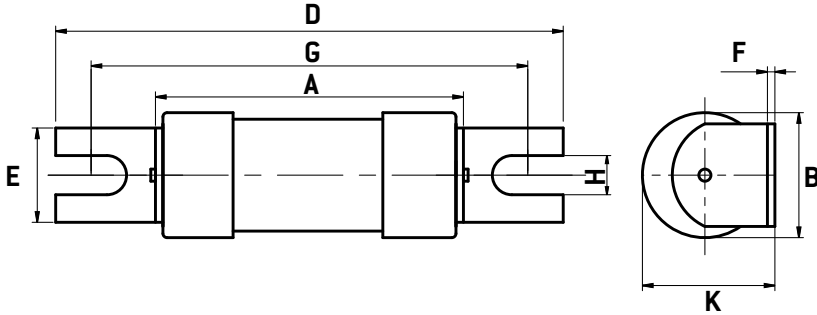
A Type - 415VAC / 250VDC



Offset Tag fuse-links gG 415VAC/250VDC

DIMENSIONS

A1 BEIT



Dimensions in mm

BS REF	Fuse Type	Current rating (A)	A MAX	B MAX	D MAX	E MAX	F NOM	G NOM	H NOM	J NOM
A1	BEIT	36, 40, 50, 63	39.5	17.1	65.5	11	11	55	5.5	-