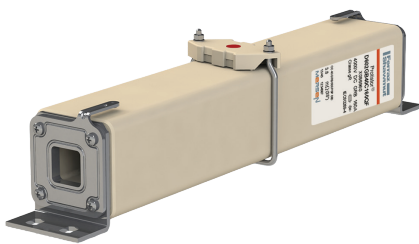


Protistor[®] size 602 gR

4000VDC

SEMICONDUCTOR PROTECTION FUSES

SQUARE BODY HIGH-SPEED FUSE-LINKS DC PROTECTION



Mersen DC high performance power fuses were developed to provide superior protection for railway power circuits.

These fuses are typically operated at more elevated temperatures than other fuse types.

They have lower I^2t to minimize damage to components in case of short circuits, and have lower watts loss and longer life.

TECHNICAL DATA OVERVIEW

Voltage Range DC	4000 VDC
Ampere Range (A)	100...280A
Speed/Characteristic	gR
Product Size	602
Weight	3,6 kg
Package	1

FEATURES & BENEFITS

- Extremely fast acting
- Current limiting
- Very low I^2t
- Worldwide acceptability
- Superior cycling ability

APPLICATIONS

- Suburban lines: 3kVDC

Protistor® size 602 gR

4000VDC

PRODUCT RANGE



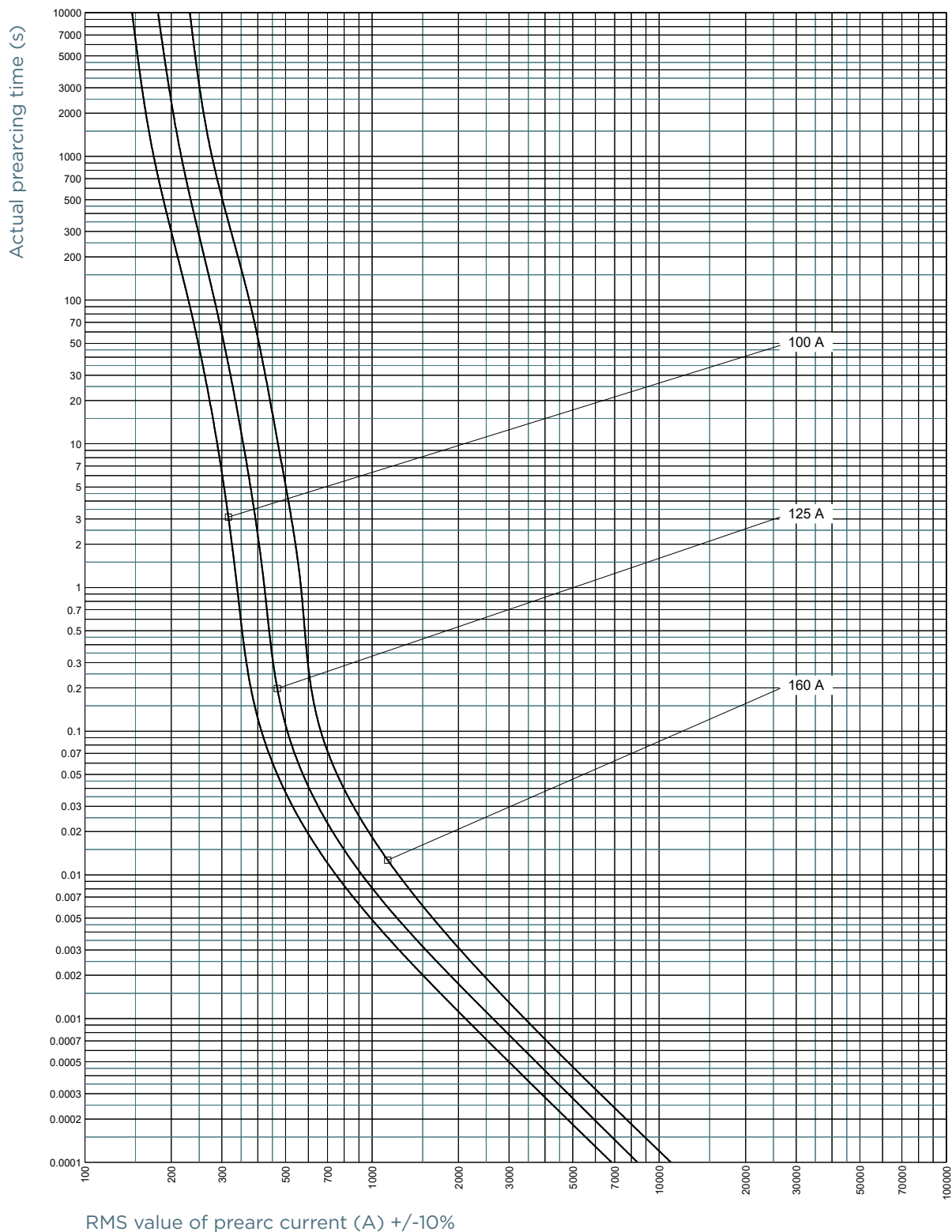
D602GB40C160QF

Bracket size 602 gR 4000VDC

Catalog number	Item number	Rated voltage DC	Rated current I _n	Pre-arcing I ² t	Watt Loss @0,8I _n	Watt Loss @I _n	Max. Interrupting Rating IR @4000VDC
D602GB40C100QF	V086958	4000 V	100 A	4,3 kA ² s	55 W	100 W	30 kA, L/R = 30 ms
D602GB40C125QF	W086959	4000 V	125 A	6,6 kA ² s	72 W	131 W	30 kA, L/R = 30 ms
D602GB40C160QF	X086960	4000 V	160 A	12,1 kA ² s	84 W	153 W	30 kA, L/R = 15 ms
D602GD40C160QF	E075766	4000 V	160 A	15,5 kA ² s	55 W	101 W	30 kA, L/R = 15 ms
D602GD40C200QF	F075767	4000 V	200 A	18,7 kA ² s	77 W	141 W	30 kA, L/R = 15 ms
D602GD40C250QF	G075768	4000 V	250 A	31,7 kA ² s	95 W	174 W	30 kA, L/R = 15 ms
D602GD40C280QF	H075769	4000 V	280 A	39,6 kA ² s	108 W	198 W	30 kA, L/R = 30 ms

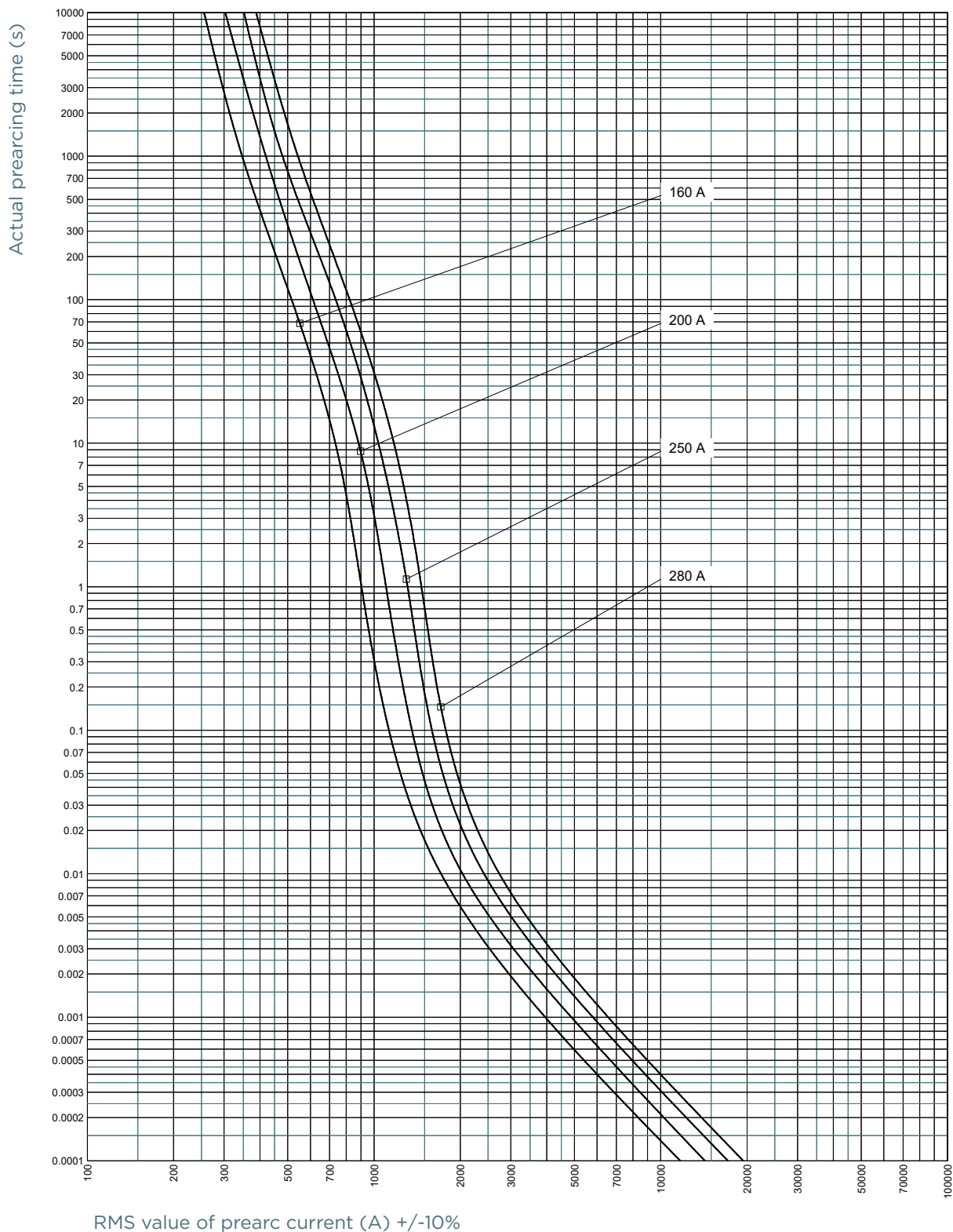
TIME CURRENT CHARACTERISTIC CURVES

4000V gRB 100A-160A



TIME CURRENT CHARACTERISTIC CURVES

4000V gRD 160A-280A

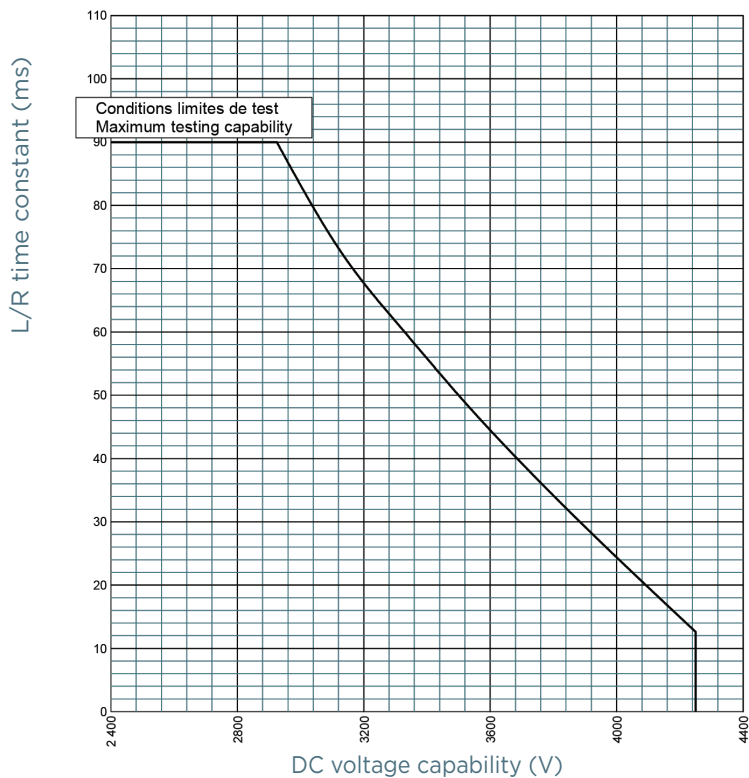


Protistor® size 602 gR

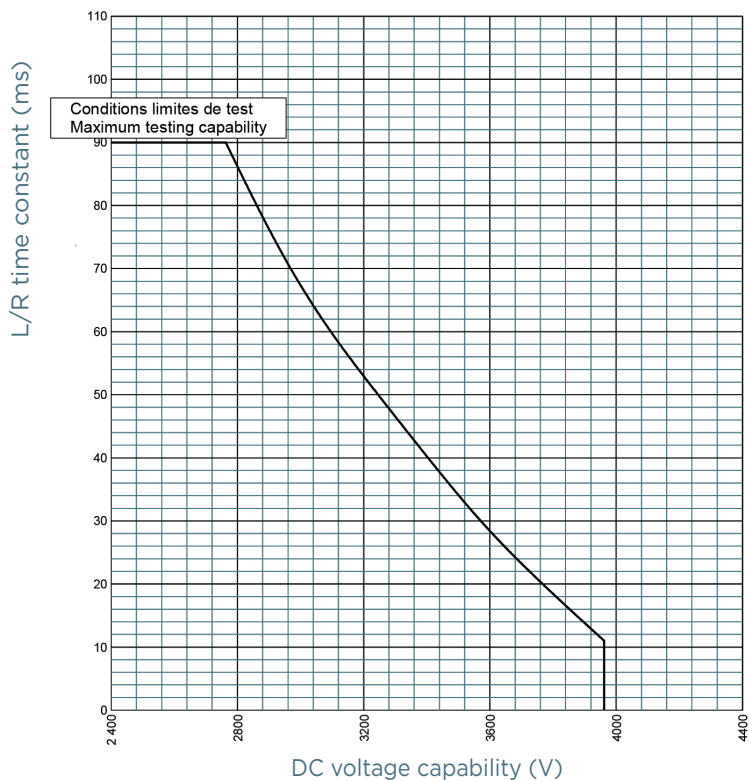
4000VDC

L/R TIME CONSTANT VS DC VOLTAGE CAPABILITY

4000V gRB 100A-160A



4000V gRD 160A-280A



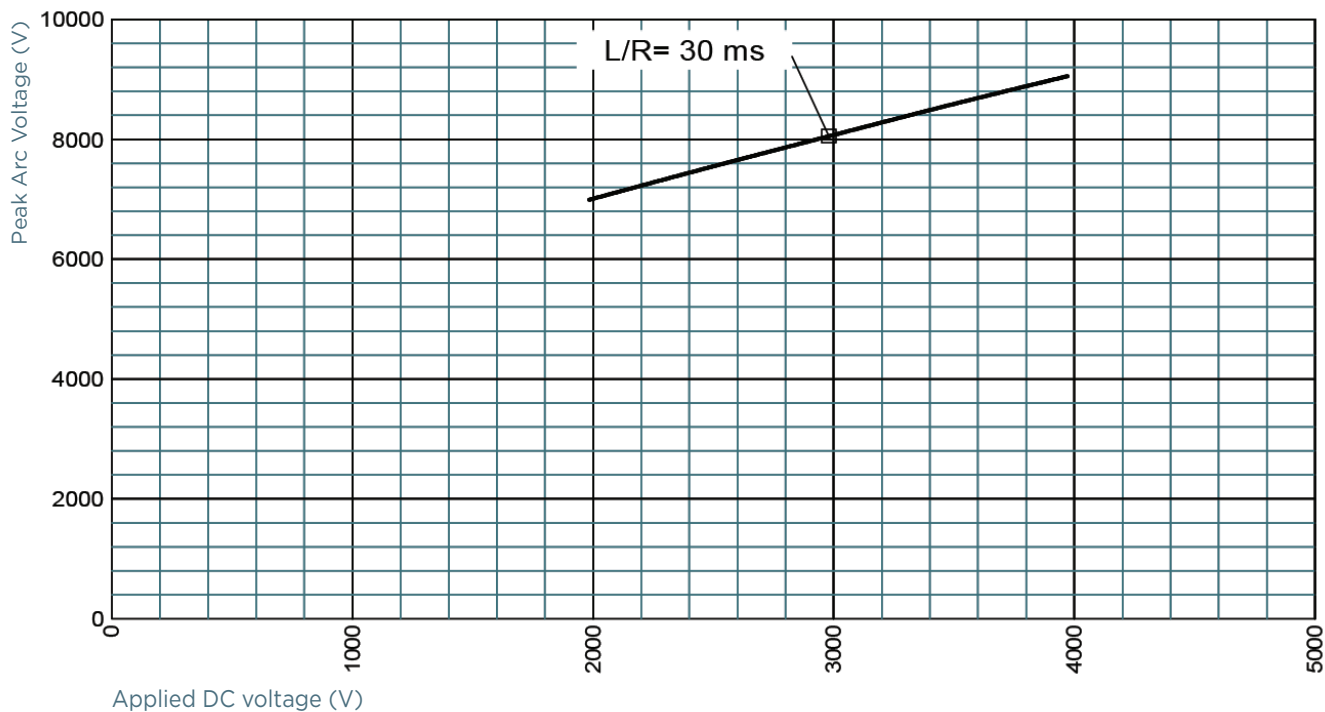
POWER DISSIPATION

4000V gR 100A-280A

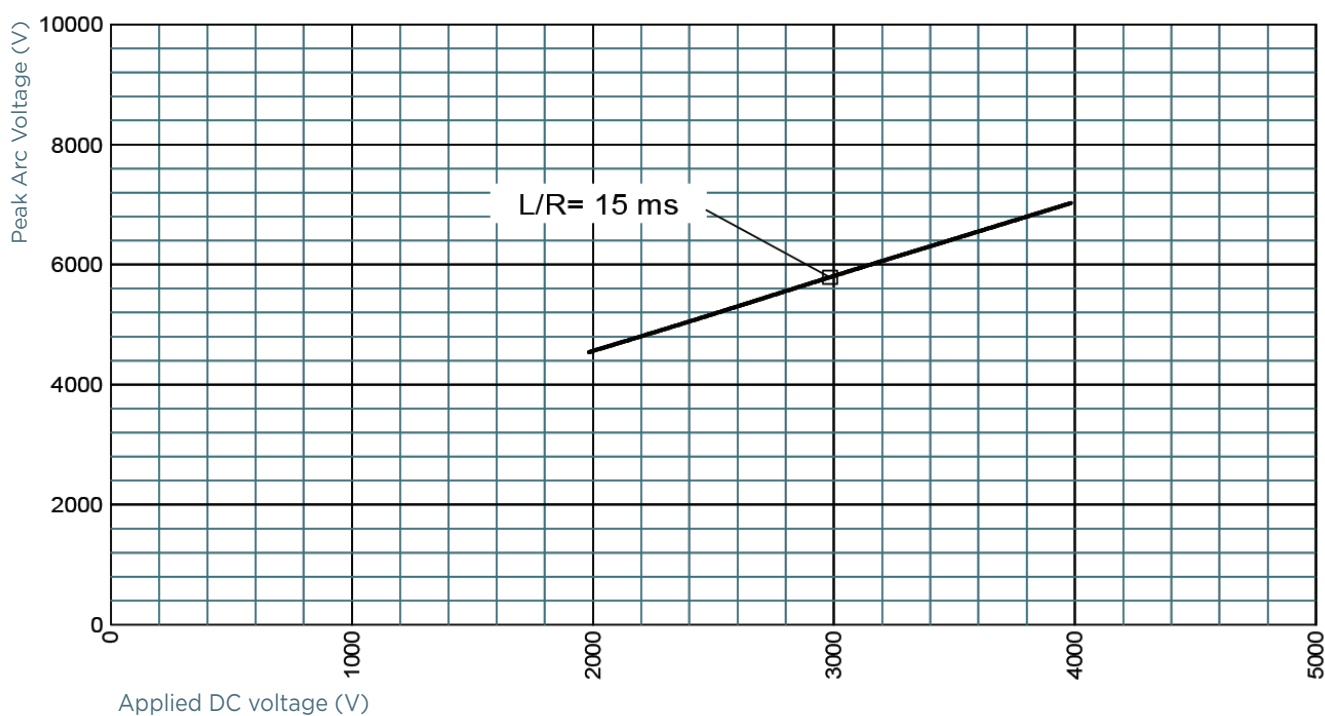


PEAK ARC VOLTAGE

4000V gRB 100A-160A

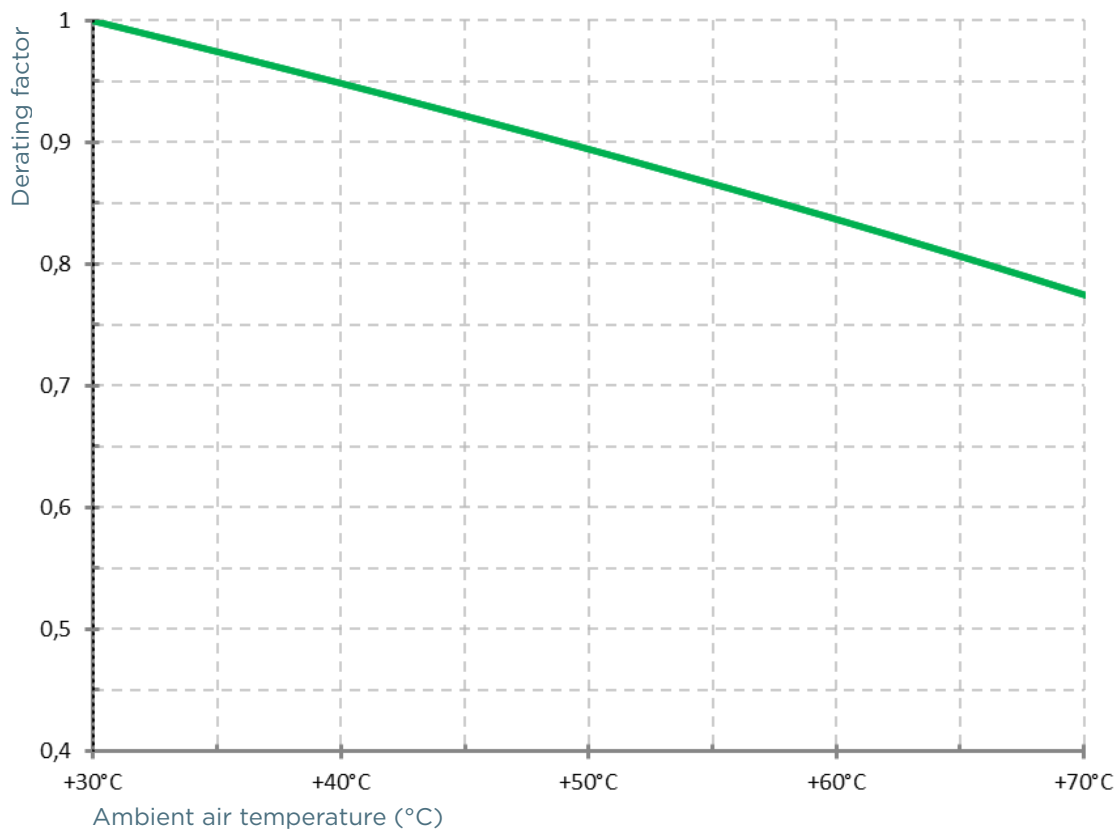


4000V gRD 160A-280A



TEMPERATURE DERATING

Derating factor of rated current according to ambient air temperature (°C)

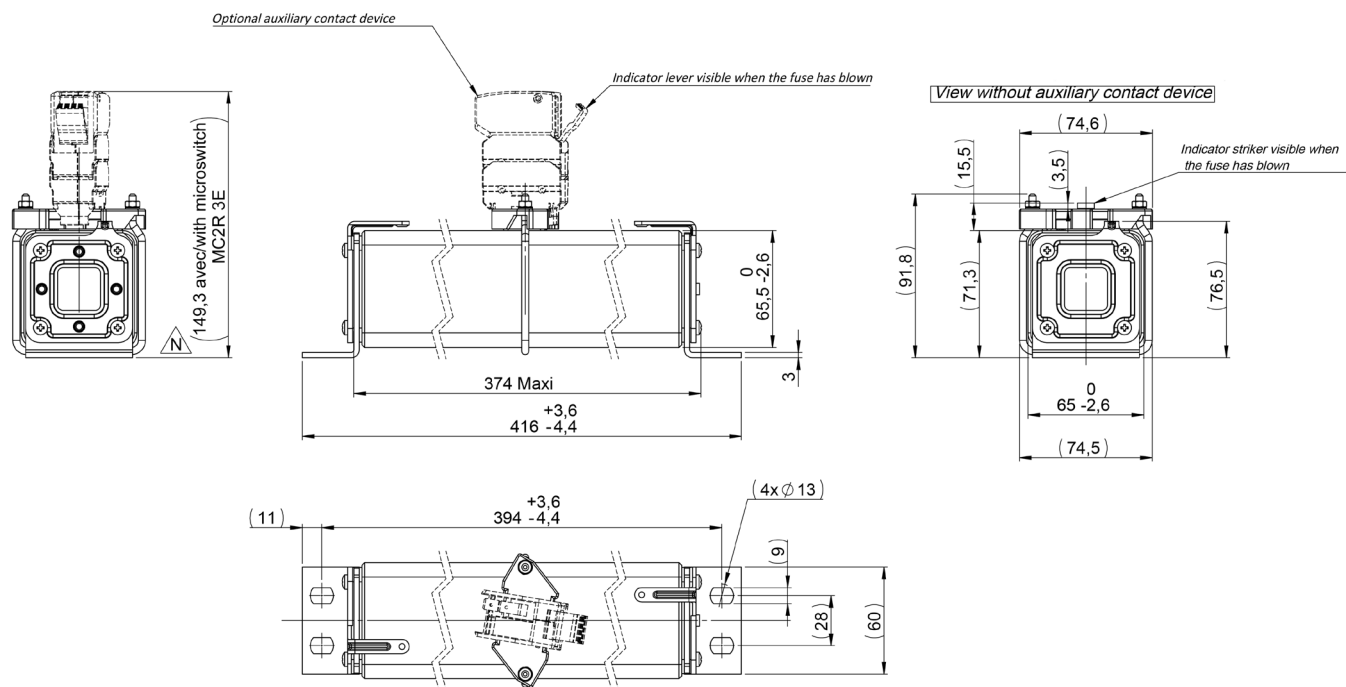


Protistor® size 602 gR

4000VDC

DIMENSIONS

Bracket size 602 gR 4000VDC



Dimensions in mm