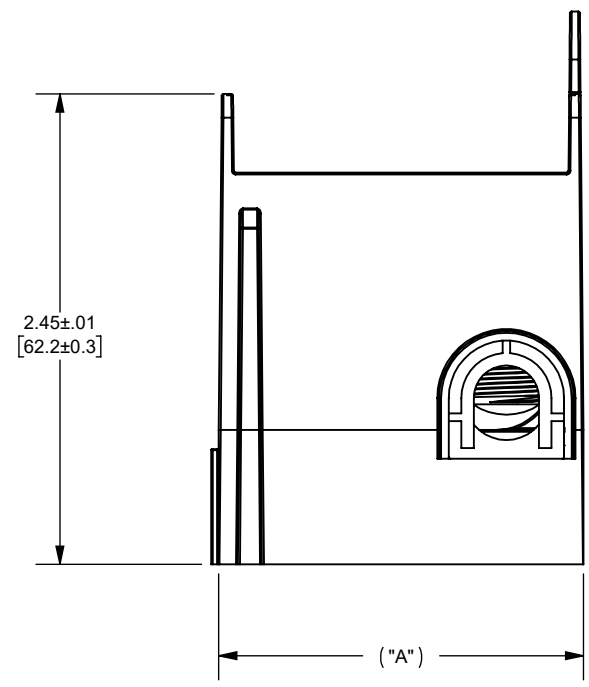
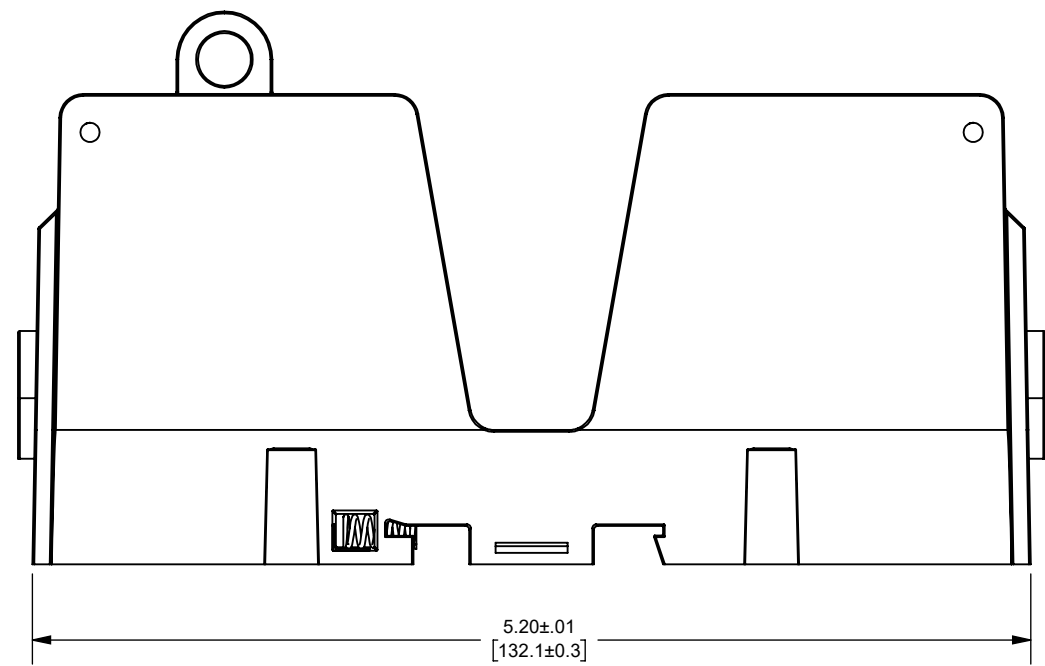
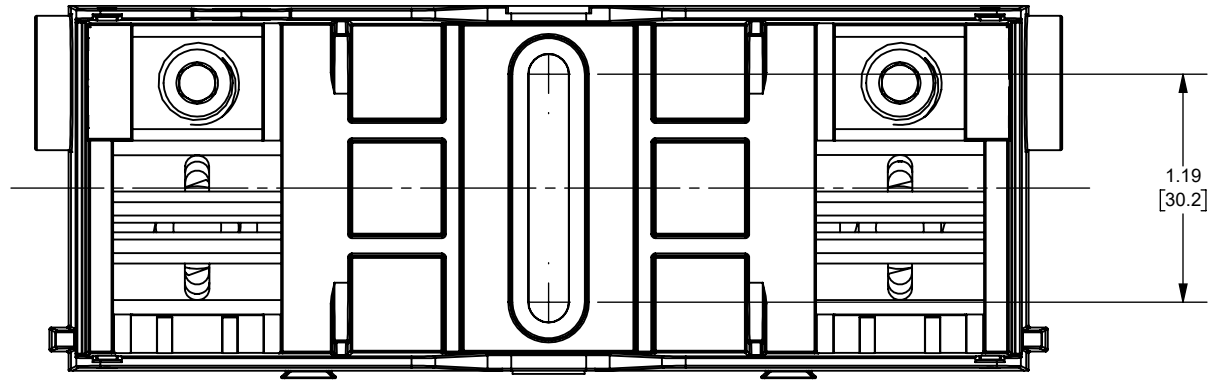


REV.	DATE	ECO	DESCRIPTION	BY	CK	APP
A	3/15/2023	16668	INITIAL RELEASE	MAR	N/A	SEE ECO
B	9/20/2024	18711	ADDED TYPE AND DIM 1.19 [30.2]	YF	N/A	SEE ECO



OUTLINE DIMENSIONS
NOT TO BE USED FOR PRODUCTION
DIMENSIONS IN [] ARE MILLIMETERS

CATALOG NUMBER	NUMBER OF POLES	"A" DIMENSION
FB60J100B3	3	5.700±.030 [144.8±0.9]
FB60J100B2	2	3.800±.020 [96.5±0.6]
FB60J100B1	1	1.900±.010 [48.3±0.3]

Approval stage / Etat d'approbation: APPROUVÉ POUR FABRICATION / APPROVED FOR MANUFACTURING		Product Class:/ Product Type: CLASS J FUSEHOLDER	
Initial ECO / ECO initiale: ECO-16668-000		Product amp rating:/ Voltage rating: 100A 600V	
Draw by / Dessiné par: Yadyra Fang	Date : 9/27/2024	Title / Titre: OUTLINE FB60J100B(1-3)	Weight : Masse :
Checked by / Vérifié par: Luis ARMENTA	Date : 9/27/2024	Drawing / de dessin: OUT-380447	Rev : Rév : B
Electrical Power 374 MERRIMAC STREET NEWBURYPORT, MA 01950	Éch / Scale : 1:1 Format / Size : B	Part / Article: SEE TABLE	Page : 1/1



Ce plan strictement confidentiel est la propriété exclusive de la société MERSEN sans l'autorisation écrite de laquelle il ne peut être ni reproduit, ni copié, ni communiqué à des tiers.
This drawing and specifications there on is property of MERSEN and shall not be reproduced or copied or used in whole or in part as the base for manufacture or sale of item without written permission.